The background features a dark purple gradient with two large, overlapping golden-yellow concentric circles. In the upper right, the Chinese characters '中大音樂' (CUHK Music) are written in a stylized, calligraphic purple font.

中大音樂

The Chinese University of Hong Kong

# Department of Music

Research Postgraduate Programmes

2022 Entry



# Research Postgraduate Programmes

Research Postgraduate Degree Programmes in Music at The Chinese University of Hong Kong have the longest history and also the largest intake of research postgraduates in Hong Kong. The Department offers MMus and DMus research degree programmes in Composition and MPhil and PhD research degree programmes in three concentrations, namely Historical Musicology, Theory, and Ethnomusicology. Research in Historical Musicology and Theory focuses mainly on Western Music, while that in Ethnomusicology emphasizes Chinese Music and other non-Western music cultures.



# Programmes

|                               |   |  |
|-------------------------------|---|--|
|                               | Master of Music (MMus)<br>Doctor of Music (DMus)  | Master of Philosophy (MPhil) in Music<br>Doctor of Philosophy (PhD) in Music   |
| Fields of Concentration       | Composition   | Ethnomusicology<br>Historical Musicology<br>Theory   |
| Admission Requirements        | All applicants must fulfil the CUHK General Admission Requirement and English Language Proficiency. Please visit the Graduate School website for details. |  |
|                               | In addition, applicants should have majored in Music, or have attained equivalent standard.   | In addition, applicants should have majored in the concentration chosen, or another related field. Ability to use a language other than Chinese and English, for research purpose, may be required |
| Additional Documents Required | Please visit Music Department website for details   |  |

## Normative Study Period

|          | Full-time              | Part-time              |
|----------|------------------------|------------------------|
| MMus     | 1 Year                 | 2 Years                |
| MPhil    | 2 Years                | 3 Years                |
| DMus/PhD | 36 Months <sup>1</sup> | 48 Months <sup>1</sup> |
|          | 48 Months <sup>2</sup> | 64 Months <sup>2</sup> |

<sup>1</sup> Entering with a research master's degree

<sup>2</sup> Entering without a research master's degree






## Tuition Fee

As a reference for 2022-2023 admission, the tuition fee for all research postgraduate programmes in 2021-2022 regardless of study mode (part-time or full-time) is HK\$42,100 per annum.




## Financial Support

### The Hong Kong PhD Fellowship Scheme (HKPFS)



The HKPFS was established by Hong Kong Research Grants Council in 2009 to give Hong Kong universities generous funding for our most promising full-time PhD students. As a reference for 2021-2022, it awards a CUHK Vice-Chancellor HKPFS Scholarship, which consists of a monthly stipend of HK\$26,900, as well as an annual conference and research-related travel allowance of HK\$13,500 for up to three years. Competition for the HKPFS is intense, but we have had good success with the music candidates we have nominated to the selection committee. Please visit the Graduate School website for details.



## CUHK Vice-Chancellor HKPFS Scholarship

- Offers HKPFS awardees a tuition fee waiver for their whole normative study period.
- Provides an award of HK\$40,000 (approx. US\$5,130) for lodging in the first year of study and HK\$20,000 in the subsequent years within the normative study period.
- The on-campus hostel fee will be waived in the first year of study.
- Guaranteed on-campus accommodation during the normative period of study to HKPFS awardees who submit timely applications.
- For HKPFS awardees with a normative study period of four years, CUHK provides stipend and conference travel allowance at HKPFS level for the fourth year.

PhD candidates who are nominated by CUHK to HKPFS but not selected by the RGC will be admitted to the University's regular PhD programme. They will receive the CUHK Vice-Chancellor's PhD Scholarship of HK\$80,000 subject to satisfactory study progress.

## CUHK Postgraduate Studentships

Anyone who is registered for full-time studies in research degree programmes at CUHK and who has not been awarded a Hong Kong PhD Fellowship can be considered for CUHK postgraduate studentships. Students awarded studentships will receive a stipend for assisting in the teaching, research work, and other duties assigned during the normative study period. The provisional monthly stipend for Postgraduate Studentship (2021-2022) is around HK\$18,025 – 18,525.

# Faculty

## **CHAN Kai Young**

B. A., M. Mus. (CUHK); LMusTCL; LTCL; A. M., Ph. D. (Penn)

## **CHEONG Wai Ling** Programme Director, Master of Arts in Music

B.A. (CUHK); Cert. Japanese Studies (Kyoto); M.Phil., Ph.D. (Cantab.)

## **Adam KIELMAN**

B.A., M.A., Ph.D. (Columbia)

## **LAU Frederick** Department Chair

B.A. (CUHK); M.M., D.M.A. (Illinois)

## **LEE Wan-Ki Wendy** Head, Graduate Division in Music

B.M. (Toronto); ARCT (RCM, Toronto); LTCL, FTCL (Trinity College of Music, London); M.M., Ph.D. (Michigan)



## LO Hau Man

B.A., M.Mus., D.Mus. (CUHK)

## MAK Su Yin

B.A. (Toronto); R.S.A.CertTEFL; M.A. (Queens, CUNY); Ph.D. (Eastman, Rochester)

## Brian THOMPSON

B.F.A. (Concordia); M.A. (Victoria); MLIS (McGill); Ph.D. (HKU)

## POON Kiu Tung

B.A. (CUHK); M.Mus (Indiana); D.M.A. (UT Austin)

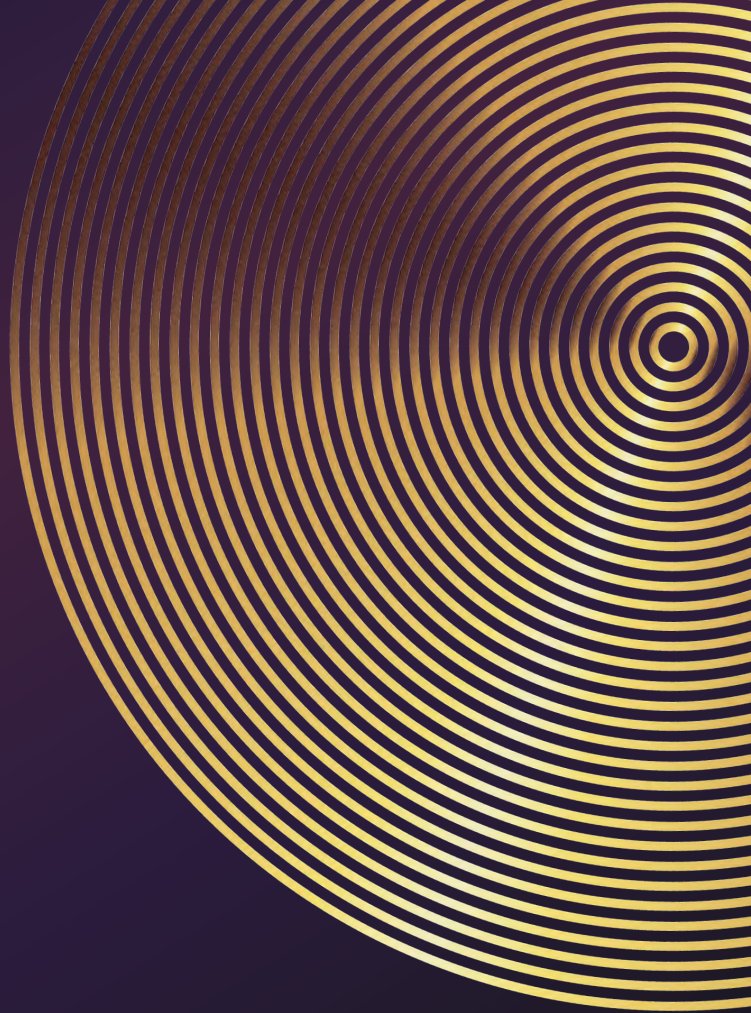
## TSENG Sun Man

B.A., EMBA (CUHK); M.Mus. (Manhattan School of Music);  
Pg. Dip in Arts Admin. (The City University, London)



# Application

| Programmes           | Application Deadline | Online Application  |
|----------------------|----------------------|---|
| HKPFS Applicants     | Early December       | <a href="https://cerg1.ugc.edu.hk/hkpfs/index.html">https://cerg1.ugc.edu.hk/hkpfs/index.html</a> |
| Non-HKPFS Applicants |                      | <a href="http://www.gs.cuhk.edu.hk">http://www.gs.cuhk.edu.hk</a>                                 |



Graduate Division of Music  
**Department of Music**  
201 Hui Yeung Shing Building, CUHK



+852 3943 6510



[www.cuhk.edu.hk/mus](http://www.cuhk.edu.hk/mus)



[music@cuhk.edu.hk](mailto:music@cuhk.edu.hk)



CUHK Department of Music